

3 in 1 Electric Paint Sprayer Model No. DP003



Instruction Manual

Introduction

To get the most information of your new electric paint sprayer, please read these instructions and the safety advice before use. Please keep the instructions in a safe place in case you need to remind yourself of the electric paint sprayer's functions at a later date.

This electric paint sprayer is suitable for spray painting of walls, garden, fence, desk / table, and also it could be used as vacuum cleaning (dust-cleaning) , or work as inflating for the balls / swimming ring etc.

Technical specifications

Operating voltage: 230V - 50Hz or 110V – 60Hz

Power consumption: 600 W

Free-load Speed: 30000rpm

Max. Capacity: 1.3 m³ / min

Working pressure: 3-4bar

Pressure at the nozzle: 2psi

Nozzle diameter: 2.0mm, 2.5mm

Paint Reservoir: 800ml

Sound Pressure LpA: 83.2dB(A), K=3 dB(A)

Sound power LwA: 96.2dB(A), K=3 dB(A)

Contents in the box

Main unit. With spray gun. with dust collection function.

with 3pcs Soft tube, 1pcs Straight Tube, 2pcs Plastic tank, 2pcs brush

with 1pc belt, with 1pc viscosity measuring cup. Electrical plug 1.8m

Safety advice

- Avoid damaging the paint sprayer's nozzle, as this can affect spraying accuracy.
- Never spray paint at people or animals.
- Never spray the spray guns motor as this can block its air intakes.
- Never spray paint towards open flames or hot surfaces, as many paints are flammable.
- Paint often requires thinning before it can be used in a spray gun, not doing so can block the nozzle. Check the manufactures instructions before buying the paint to ensure its suitability for use.
- Always wear protective goggles, mask and clothing when using the paint sprayer.

Assembly and preparation

1. Attach the paint sprayer to one end of the hose, and connect the other end to the motor.
2. Refer to the paint manufactures instructions regarding thinning the paint.
3. Unscrew the reservoir and fill it with paint, then re-attach it to the paint sprayer.

4. Insert the plug into the mains sockets and switch on the power to the motor. The indicator light will come on and the motor will send air through the hose.
5. For safety reasons the motor must be switched off when connecting or disconnecting the hose and paint sprayer.

Adjusting the flow of air

Turn the air control valve clockwise to reduce the flow of air, and counter-clockwise to increase it.

Operating instructions

Mixing the paint

- Step 1: First measure the viscosity of the paint. To do this, stir the paint well, then dip the viscosity measurement cup into the paint and fill to just below the rim. Raise the cup and wait to see how long it takes until the paint has drained completely.

The maximum viscosity value for this spray gun is 30 to 35 seconds.

- Step 2: Thinning the paint. If the value is lower than 30 seconds, you will not need to thin the paint. If the value is greater than 35 seconds, the paint must be thinned until a value of between 30 and 35 is reached. Always thin paint in small amounts using a suitable thinner. When choosing a thinner, observe the instructions from the manufacturer in order to ensure that you are using the correct thinner type and that the paint can be thinned.

Stir the paint thoroughly before and after thinning. Do not thin the paint beyond the recommendations of the manufacturer.

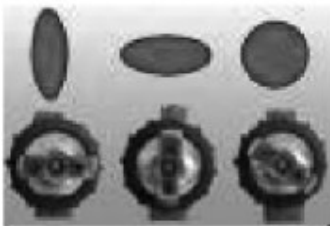
- Step 3: Sieve the colour through a fine metal sieve or nylon stocking in order to remove any particles that may block the gun.

- Step 4: To remove the paint container turn it anti-clockwise. Pour the paint into the container. Only fill the container with paint up to the point where it starts to narrow, then screw the container firmly to the spray gun. Make sure that the seal in the lid and the feed hose are not damaged and are fitted correctly.

Spraying instructions

Operating elements of the spray gun

1. Spray cap: Releasing the securing ring allows the direction of the air to be set. The horizontal setting is recommended for spraying up and down, the vertical setting for spraying from side to side.



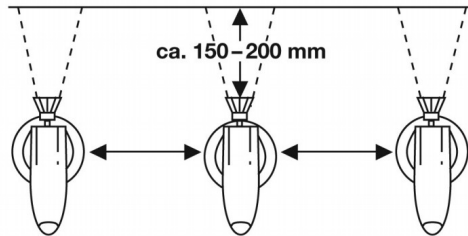
2. Paint quantity regulator: This regulator controls the amount of paint released when the trigger on the handle is pushed. The paint quantity regulator must be set before any painting work is carried out. We recommend that you start with a test area.

3. Handle of the spray gun: As soon as the compressor is switched on, the spray gun is

supplied with compressed air. The paint only flows when the trigger (a) on the handle is actuated.

General instructions for spray painting

Individual spraying movements should always be carried out at a constant speed. Always keep the gun at the same distance to the surface. Avoid rocking or circular movements. Hold the gun straight and maintain an even distance.



Cleaning

Always clean the electric paint sprayer immediately after use.

Remove the plug from the mains socket before cleaning.

Disconnect the container, and clean it using a suitable detergent or thinner as per the paint manufacturers instructions.

Fill the container with the appropriate detergent or thinner and spray the paint sprayer until it is clean.

Wipe the exterior of the paint sprayer with a well-wrung cloth dipped in the appropriate detergent or thinner.

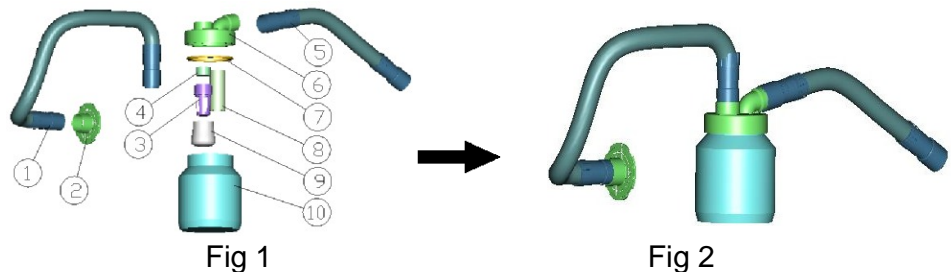
Unscrew the nozzle from the paint sprayer and clean with the appropriate detergent or thinner.

The motor and hose can be cleaned using a well-wrung damp cloth.

Used as a vacuum cleaner (for DIY, not for professional)

1. Assemble the container parts

1. inlet pipe
2. inlet cover
3. filter support
4. sponge filter
5. Dust inlet pipe
6. Upper cover
7. Seal rubber ring
8. Inside piper
9. Filter
10. container



The container parts are assembled when you received, but if you clean it after used, please assemble them according to the instruction.

2. Connect to the motor house



Fig 3

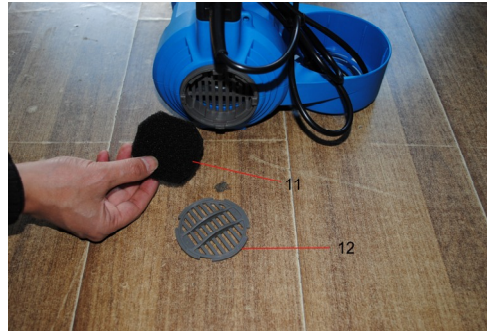


Fig 4



Fig 5



Fig 6



Fig 7



Fig 8

When you want to use the machine as a vacuum cleaner, please take off the cover by turning in counterclockwise(fig 3), be careful of the filter sponge, it is used to filter the income dirty(fig 4).Then please connect the assembled container unit(fig 2) with the motor house by turning the cover 11 in clockwise. And connect with different work head, switch on, now enjoy the work(fig 6,7,8).

Warning! After used several minutes, the motor sound is heavy, while the income air becomes weak, it means the container is full of dust. Please shut off the power, turn off the container and empty it. Please clean the filter (parts 3,4,8), and the filter(part11) in the motor house(fig 4).

After long time works, please wash the filters, the container, the pipes, and the work heads, then dry them by air before next use. You can keep the whole container parts to store. But when you take off the inlet cover(part2), be careful of the filter(part11) and put back the cover(part12) for spray gun and blower function.

Warning! It is not a toy, Out of children's reach.

Used as a blower

1. Assemble the blower



Fig 9



Fig 10

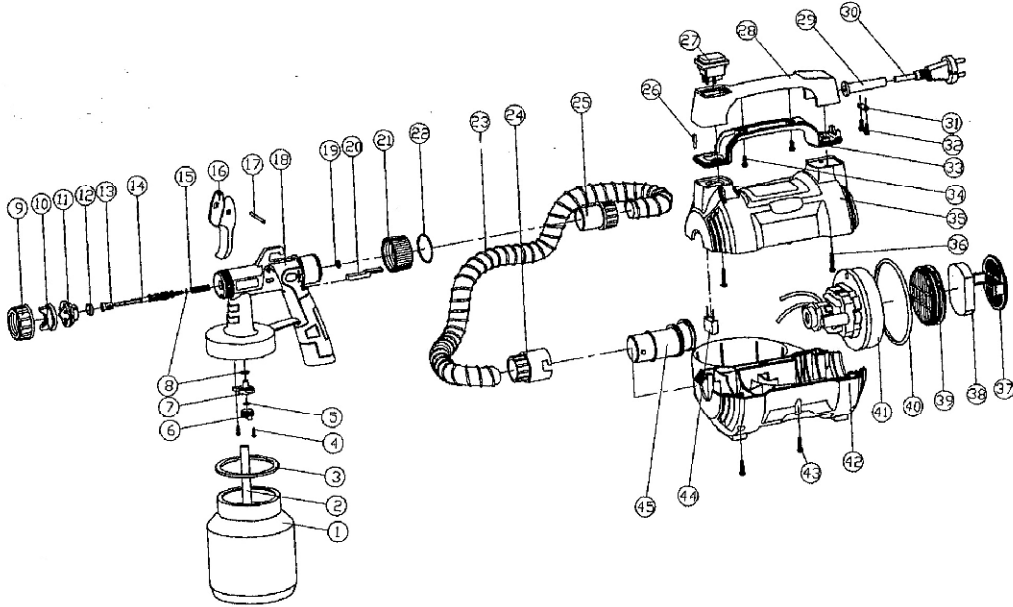
Connect the blower head(part 13) to the outlet pipe, switch on, the blower is working. Please connect the head to the pipe tightly to avoid the separation while using.

The blower is used to blow the lower pressure items, and after a long time running, please shut off the motor for rest if the machine is hot.



Fig 11

Exploded drawing and spare parts list for DP003



No.	Description	No.	Description	No.	Description
1	Cup	16	Trigger	31	Cable fixer
2	Suction tube	17	Pin 3	32	Screw ST4*11
3	Sealing washer for cup	18	Spray gun body	33	Down handle
4	Screw ST3*12	19	Seal piece	34	Screw ST4*11
5	Non-return valve piece	20	Fix staff	35	Up motor cover
6	Non-return valve cover	21	Regulating knob	36	Screw ST4*22
7	Valve seat	22	Clip ring	37	Air cover
8	O-ring	23	Soft tube	38	Filter
9	Screw cap	24	Soft tube connector	39	Filter seat
10	Butterfly spraying head	25	Spray gun connector	40	Anti-shake washer
11	Nozzle	26	Pushing spring 6.3	41	Motor
12	Big washer	27	On/off switch	42	Down motor cover
13	Small washer	28	Up handle	43	Screw ST4*16
14	Needle	29	Cable cover	44	Capacitor 0.22
15	Spring	30	Cable	45	Air outlet tube