

Operation manual for **Airless paint sprayer**

High Pressure Electric **Airless paint sprayer Titan 440i** model
intelligent series



Remark: this guide manual is the same with model [DP-6389](#) ,the content include :the operation of equipment,cleaning ,maintenance ,and repair,be sure to pre-operational ,read the manual carefully before you use this machine.

1. warning and precautions

Safety Precautions

This manual contains information that must be read and understood before using the airless sprayer equipment. When you come to an area that has one of the following symbols, pay particular attention and make certain to heed the safeguard.

WARNING

This symbol indicates a potential hazard that may cause serious injury or loss of life. Important safety information will follow.

CAUTION

This symbol indicates a potential hazard to you or to the equipment. Important information that tells how to prevent damage to the equipment or how to avoid causes of minor injuries will follow.

NOTE: Notes give important information which should be given special attention.

WARNING

HAZARD: Injection injury – A high pressure fluid stream produced by this equipment can pierce the skin and underlying tissues, leading to serious injury and possible amputation. See a physician immediately.

DO NOT TREAT AN INJECTION INJURY AS A SIMPLE CUT! Injection can lead to amputation. See a physician immediately.

The maximum operating range of the sprayer is 3200 PSI/221BAR fluid pressure.

PREVENTION:

- NEVER aim the airless spray gun at any part of the body.
- NEVER allow any part of the body to touch the fluid stream. DO NOT allow body to touch a leak in the fluid hose.
- NEVER put hand in front of the gun. Gloves will not provide protection against an injection injury.
- ALWAYS lock gun trigger, shut pump off, and release all pressure before servicing, cleaning tip or guard, changing tip, or leaving unattended. Pressure will not be released by turning off the motor. The PRIME/SPRAY valve handle must be turned to PRIME to relieve the pressure. Refer to the PRESSURE RELIEF PRESSURE described in the pump manual.
- ALWAYS keep airless tip guard in place while spraying. The tip guard provides some protection but is mainly a warning device.
- ALWAYS remove the spray tip before flushing or cleaning the system.
- Paint hose can develop leaks from wear, kinking and abuse. A leak can inject material into the skin. Inspect the hose before each use.
- NEVER use a spray gun without a working trigger lock and trigger guard in place.
- All accessories must be rated at or above 3200 PSI/221 BAR. This includes spray tips, guns, extensions, and hose.

NOTE TO PHYSICIAN:

Injection into the skin is a traumatic injury. It is important to treat the injury as soon as possible. DO NOT delay treatment to research toxicity. Toxicity is a concern with some coatings injected directly into the blood stream. Consultation with a plastic surgeon or reconstructive hand surgeon may be advisable.

HAZARD: EXPLOSION AND FIRE – Solvent and paint

fumes can explode or ignite. Severe injury and/or property damage can occur.

PREVENTION:

- Provide extensive exhaust and fresh air introduction to keep the air within the spray area free from accumulation of flammable vapors.
- Avoid all ignition sources such as static electricity sparks, electrical appliances, flames, pilot lights, hot objects, and sparks from connecting and disconnecting power cords or working light switches.
- Do not smoke in spray area.
- Fire extinguisher must be present and in good working order.
- Place pump at least 20 feet (6.1 m) from the spray object in a well ventilated area (add more hose if necessary).

Flammable vapors are often heavier than air. Floor area must be extremely well ventilated. The pump contains arcing parts that emit sparks and can ignite vapors.

- The equipment and objects in and around the spray area must be properly grounded to prevent static sparks.
- Use only conductive or grounded high-pressure fluid hose. Gun must be grounded through hose connections.
- Power cord must be connected to a grounded circuit.
- Always flush unit into separate metal container, at low pump pressure, with spray tip removed. Hold gun firmly against side of container to ground container and prevent static sparks.
- Follow material and solvent manufacturer's warnings and instructions.
- Use extreme caution when using materials with a flashpoint below 70° F (21° C). Flashpoint is the temperature at which a fluid can produce enough vapors to ignite.
- Plastic can cause static sparks. Never hang plastic to enclose spray area. Do not use plastic drop cloths when spraying flammable materials.
- Use lowest possible pressure to flush equipment.

GAS ENGINE (WHERE APPLICABLE)

Always place sprayer outside of structure in fresh air. Keep all solvents away from engine exhaust. Never fill fuel tank with a running or hot engine. Hot surface can ignite spilled fuel. Always attach ground wire from pump to a grounded object. Refer to engine owner's manual for complete safety information.

HAZARD: EXPLOSION HAZARD DUE TO INCOMPATIBLE

MATERIALS – will cause severe injury or property damage.

PREVENTION:

- Do not use materials containing bleach or chlorine.
- Do not use halogenated hydrocarbon solvents such as bleach, mildewcide, methylene chloride and 1,1,1 – trichloroethane. They are not compatible with aluminum.

- Contact your coating supplier about the compatibility of material with aluminum.

HAZARD: HAZARDOUS VAPORS – Paints, solvents, insecticides, and other materials can be harmful if inhaled or come in contact with body. Vapors can cause severe nausea, fainting, or poisoning.

PREVENTION:

- Use a respirator or mask if vapors can be inhaled. Read all instructions supplied with the mask to be sure it will provide the necessary protection.
- Wear protective eyewear.
- Wear protective clothing as required by coating manufacturer.

HAZARD: GENERAL – Can cause severe injury or property damage.

PREVENTION:

- Read all instructions and safety precautions before operating equipment.
- Follow all appropriate local, state, and national codes governing ventilation, fire prevention, and operation.
- The United States Government Safety Standards have been adopted under the Occupational Safety and Health Act (OSHA). These standards, particularly part 1910 of the General Standards and part 1926 of the Construction Standards, should be consulted.
- Use only manufacturer authorized parts. User assumes all risks and liabilities when using parts that do not meet the minimum specifications and safety devices of the pump manufacturer.
- Before each use, check all hoses for cuts, leaks, abrasion or bulging of cover. Check for damage or movement of couplings. Immediately replace hose if any of those conditions exist. Never repair a paint hose. Replace with a grounded high-pressure hose.
- All hoses, swivels, guns, and accessories must be pressure rated at or above 3200PSI/221 BAR.
- Do not spray outdoors on windy days.
- Wear clothing to keep paint off skin and hair.
- Always unplug cord from outlet before working on equipment.

Grounding Instructions

This product must be grounded. In the event of an electrical short circuit, grounding reduces the risk of electric shock by providing an escape wire for the electric current. This product is equipped with a cord having a grounding wire with an appropriate grounding plug. The plug must be plugged into an outlet that is properly installed and grounded in accordance with all local codes and ordinances.

DANGER — Improper installation of the grounding plug can result in a risk of electric shock. If repair or replacement of the cord or plug is necessary, do not connect the green grounding wire to either flat blade terminal. The wire with insulation having a green outer surface with or without yellow stripes is the grounding wire and must be connected to the grounding pin.

Check with a qualified electrician or serviceman if the grounding instructions are not completely understood, or if you are in doubt as to whether the product is properly grounded. Do not modify the plug provided. If the plug will not fit the outlet, have the proper outlet installed by a qualified electrician.

Grounded Outlet

Grounding Pin

Cover for grounded outlet box

CAUTION

Use only a 3-wire extension cord that has a 3-blade grounding plug and a 3-slot receptacle that will accept the plug on the product. Make sure your extension cord is in good condition. When using an extension cord, be sure to use one heavy enough to carry the current your product will draw. An undersized cord will cause a drop in line voltage resulting in loss of power and overheating.

2.Name of equipment Components and features

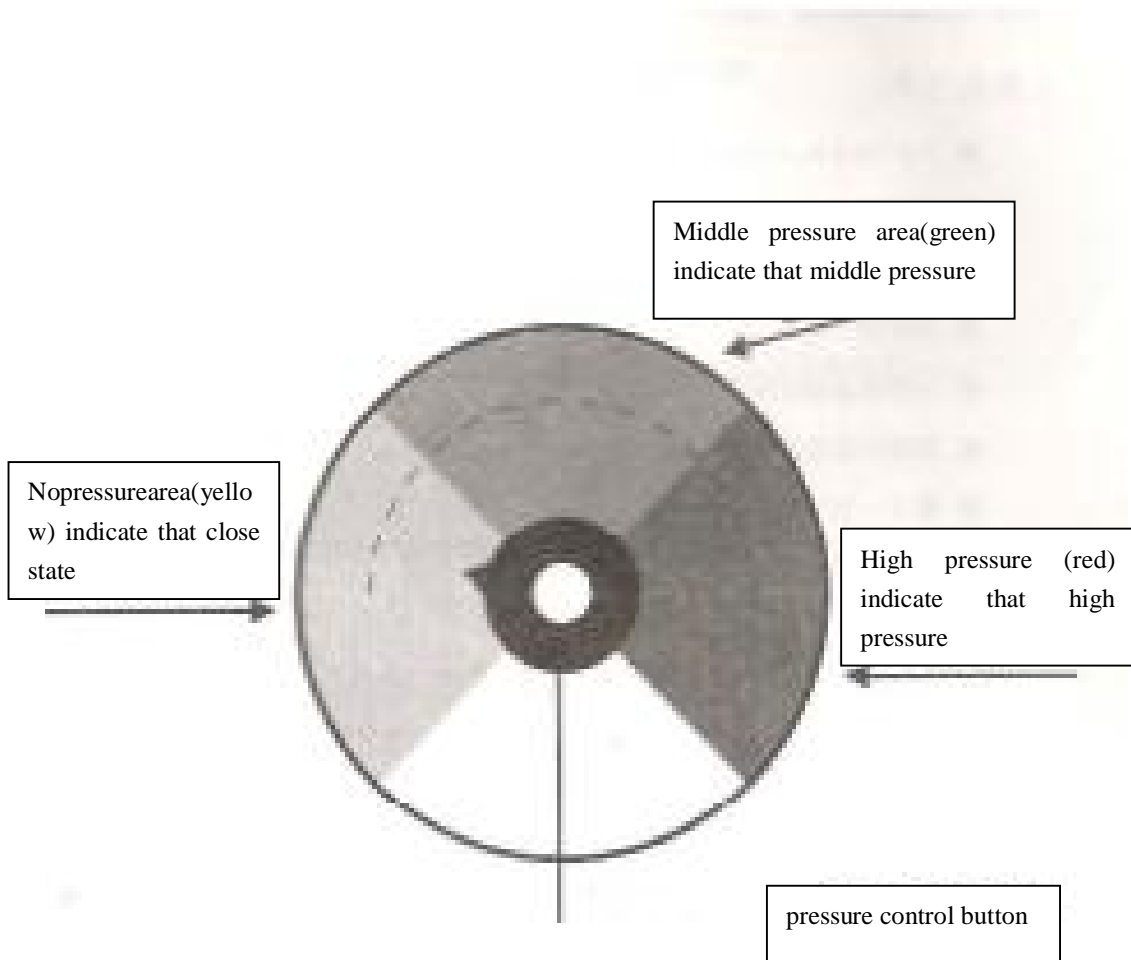
introduction



A	Motor	DC motor , 220V, 50HZ, single-phase
B	ICS intelligent Pressure controller.	Pressure sensors and equipment have suggested that the status of the equipment fuction
C	Suction Components	Use Within the upper and lower Components for the two valve coating will be added after the supercharger and exhaust
D	Pressure adjustment Knob /Button	Control the coating Pressure export
E	On/off switch	Control an equipment operation or stop

F	Pump filters	The percolation gets into the coating in the equipment
G	Return Valve	return to vertical direction for the state open ,the horizontal direction for spraying state (close)
H	Coating painting outlet	Link Coating tube and manometer Position
I	Suction tube	Will be from buckets in the paint inhalation equipment
J	Paint return tube	Return to the state paint or solvent outflow from here

✂ The pressure control button operating Constructions



3. operation

I prepare before switching on.

1. prepare tool:

- i. 5-inch,6-inch all within a hexagonal wrench.
- ii. Cross screw 4
- iii. 14-17、 17-19of a double-headed wrench
- iv. a blender or a stirring rod
- v. antivirus mask and a set of overalls
- vi. a brush
- vii. some rags
- viii. a multimeter
- ix. 30-meter, 2.5MM² power line extension
- x. a power regulator

2. preparatory steps:

- (1)assurance suction tube and the reflux tube link the right of position and screwed tightly
- (2)firstly contect on the coating manometer exit ,then 15 meter high presure nylon coating of pressure gauges connected to the export terminal and screwed tightly (pressure gauge in the first coating to the exit)
- (3)havig to use two wrench will be no high-pressure airless spray gun connected to the head and another screwed tightly .
- (4)detemine pressure manometer control buttons set in the display more than 150 locations
- (5)multimeter detemined by measureing power supply is 220-250(equipment allowing fluctutation of voltage)volts of voltage.
- (6)equipment will be displayed at the distance of at least 7.5meters in construction place dry region .

3. the initial use of new equipment:

the new equipment of the factory contain a protective effect lubricants,so the initial use of new equipment need to join the clean water of few soap to take in to clean ,the flollowing step is cleaning:

- (1)add to suction tube containing a little soapy water in the buckets
- (2)add to the waste will be returned in the paint barrels\buckets.
- (3)return valve will be installed in the vertical direction .
- (4)open equipment power switch..
- (5)let soapy water to peration equipment in the equipment within the circle ,until the outflow of clean water from the return tube .

II preparetive before spraying:

before spraying ,they must first determine spray paint has been good and have been initially harmonic filtering ,otherwise undesirable coating equipment will in creas wear and reduce the life span of equipment .in addition ,each time before spraying ,the paint must be used by delicated diluent (such as spraying latex paint water can be used)to allow equipment to cycle again and again spraying ,the following is operation steps:

- (1)add suction tube will be fitted with special diluent or clean in the bucket.
- (2)add to the waste will be returned in paint bucket.
- (3)Pressure control buttons will be set in the middle (yellow areas) but the bottom of the location of equipment functioning.
- (4)return valve will be installed in the vertical direction.
- (5)Power equipment opened.
- (6)equipment to operation 15 to 30 seconds until the clean diluent from the outflow of return
- (7)shut the powers switch.
- (8)set the reflux valve to the position of level.
- (9)turn on the power switch

(10) open spray gun insurance .



(11) paint gun mouth to discard the paint wall inside the bucket ,deduction under the trigger,and the spray gun to paint the original old solvent removed ,until the clean up of the new solvent exclusion . (as the above chart)



(12) close spray gun insurance (as the right chart)

(13) slowly pressure control buttons will be set in the high pressure (green areas) position.

(14) carefully check the equipment in every area whether there is a drip phenomenon and if so ,please follow the “pressure relief steps” for pressure relief ,then drip screwed tightly onto the site .

2. spraying:

(1) add suction pipe will be required for spraying paint bucket .

(2) add to the waste will be returned in paint buckets.

(3) pressure control button will be set in the middle (yellow area)but the bottom of the location of equipment functioning .

(4) return valve will be installed in the vertical position .

(5) start equipment

(6) equipment to begin operation until the outflow of the paint from the reflux tube .

(7) shut \close equipment power .

(8) move the reflux tube to the coating buckets

(9) return valve will be set in the horizontal position.

(10) Turn on the power switch.

(11) open spray gun insurance .

(12) the deduction under the trigger devices from the residual solvent until at gunpoint from the emit of paint (as the right chart)

(13) close spray gun insurance . (as the right chart)

(14) shut the power switch .

(15) fitted jackets and nozzle and nozzle screwed tightly .

(16) turn on the power switch .

(17) slowly pressure control buttons will be set to middle or high pressure (the yellow or green area),in the first trial elsewhere spray ,paint and gradually increase the pressure until the coating completely fogging up ,you can begin construction .



3. pressure relief steps

!! warning!!
in any equipment cleaning ,repair and maintenance
or before the middle of the break, and you must step
in accordance with the venting pressure relief .

(1) close spray gun insurance (as the right chart)



(2) shut the power switch.

(3) pressure control buttons will be set on place without pressure (black areas)

potision.

(4) open spray gun insurance and a 180-degree reversal.

(5) paint barrels of the guns at the wall ,the deduction under the trigger ,the

equipment and piping in the pressures release.



(6) close spray gun insurance . (as the right chart)

(7) return valve will be set in the vertical position ,all in the equipment may be

remnants from the pressure.

III day-to-day maintenance measures.

(1) before each spraying ,check compliance with electricity .

(2) Before each spraying, we must add seal oil into the mouth drop PSL 5-6.

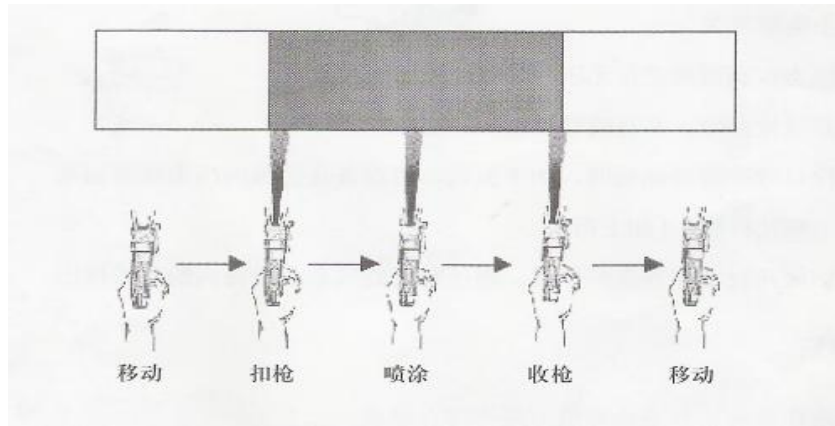
(3) after each spraying ,the equipment must be thoroughly cleaned and parts.

(4) after each spraying ,pleas high-pressure hose coiled to prevent damage to tie.

(5) If long-term storage does not work, should be used to protect the body fluid (blue bottle), a bottle of protection against the bucket of water to dilute the protection of the equipment, cycle, the role is to protect the equipment, spare parts from corrosion, and the final Let a little lubrication equipment inhalation solution, and add the PSL.

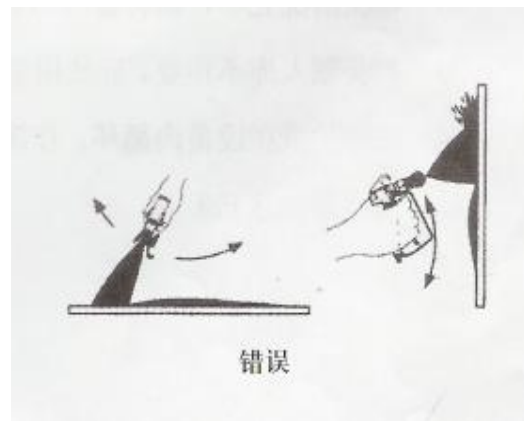
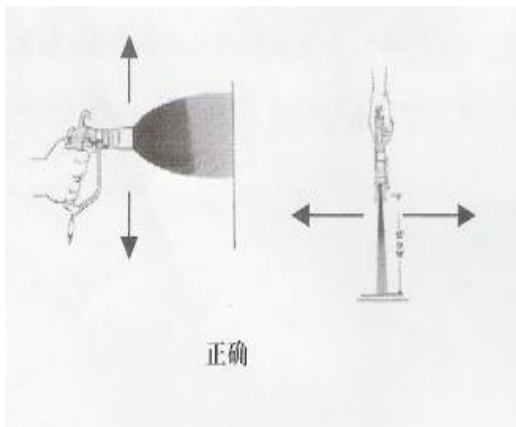
IV. spraying skills

1. Caution should be taken when operating spray gun, high-pressure hoses and operator of physical coordination between the two, the operator standing at the feet spraying distance slightly over Shoulder Width, a high-pressure pipe in their hands, high-pressure pipe will be not stretched too tight, help to Spray when the shift easier.
2. The right hand grasps spray gun, not proper button up to move a trigger with index finger and middle finger too tightly.
3. Each spray gun should be in the process of moving and dynamic relaxation trigger deduction, so the workpiece surface can be avoided excessive accumulation of paint flow and the formation of pecking.(as for chart)



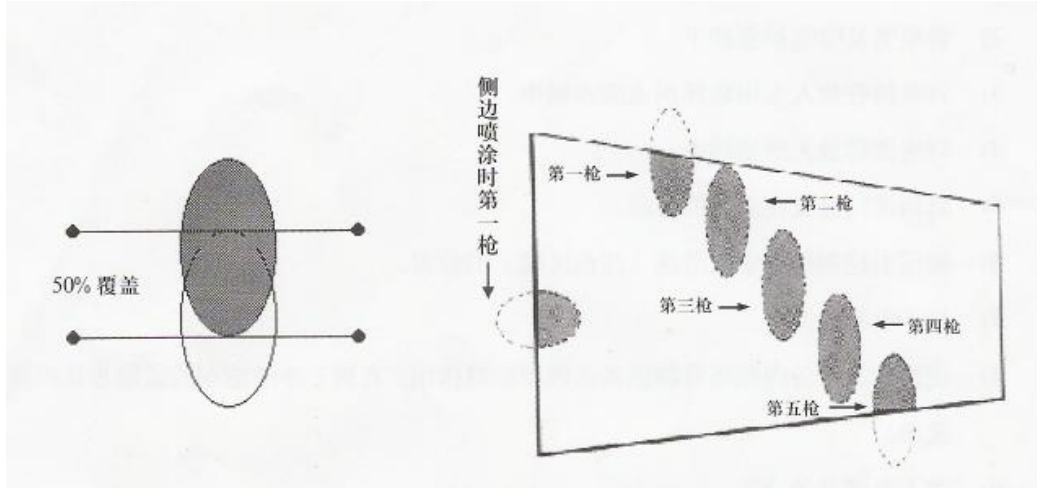
4. Spray gun should be vertical with the workpiece surface, the surface from 25 to 30 cm distance, when mobile, maintain the same speed, not slow suddenly jumped up quickly, and where possible, to maintain parallel, in order to avoid surface coatings or uneven flow pegged.

(as for chart)

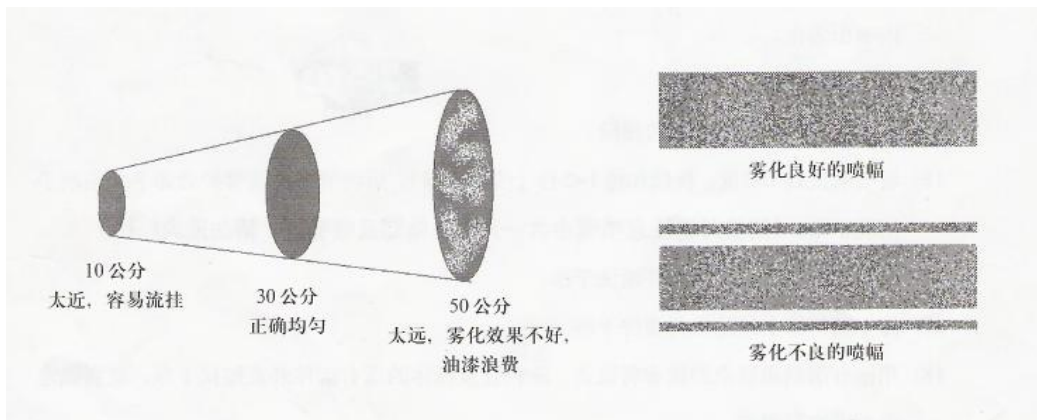


5. In order to obtain complete and uniform coating, we are here to advise you when the spray gun should be covered before each shot 50 percent, that is, 50 per cent of the lap, so the entire work surface coating line Uniform

(as for chart) .



6. Before Members of the spraying operation, to find the best in the vicinity of wood or non-construction of a workpiece on the test spraying, spraying to adjust the distance and spray pressure, as shown below, the correct spraying distance and the pressure to achieve perfection Spraying effect.



V. cleans

- (1) First according to the "pressure relief steps" to eject the pressure and coating inside equipment.
- (2) Nozzles and nozzle jacket will be unloaded.
- (3) Add suction pipe will be put into clear water bucket or the appropriation dilution.
- (4) Put the reflux tube into Paint waste barrels.
- (5) Return valve will be installed in the vertical direction
- (6) Pressure control buttons will be set in the washing position
(the red area)
- (7) Turn on the power switch.
- (8) In the solvent recycling equipment, paint residues discharged until clean water or solvent from the outflow of reflux tube.
- (9) Shut the power switch.
- (10) Return valve will be set in the horizontal position and open spray gun insurance.
- (11) turn on the power switch
- (12) Buttonning up the trigger makes solvents or clear water flush to remain coating inside high pressure tube and spray gun, until solvents or clear water a
zl
- (13) shut spray gun insurance. (as the right chart)
- (14) Loaded nozzle jacket and open spray gun insurance.
- (15) Nozzle will be reversed 180 degrees, sustained gun deduction 1 ~ 2 seconds (cleaning nozzles), nozzles and nozzle jacket unloaded and cleaned with brushes. (cleaning nozzle attention to put into a white-washers and nozzles Block, please donot lost.)
- (16) Unloading equipment and spray guns on the filter net then clean
- (17) Unload suction tube filter and clean .
- (18) With piles of rags solvent or clean water equipment, high-pressure hoses and spray gun all the components of the appearance wipe clean until a surface Adhesion without coating.
- (19) Equipment in the infusion fluid valve 5-6 PSL drop of a closed yellow liquid.
- (20) Equipment will be stored in dry, clean and well-ventilated places



VI. maintenance

Before maintenance, you must determine the fault of the equipment, otherwise, the equipments unnecessary equipment accessibility will seriously affect the function and greatly reduce the service life of equipments .

Also in the maintenance of the equipment, be sure to be dressed in overalls and maintenance tool standards, and adequate lighting and choose a well-ventilated place to carry out repairs and prepare a bucket of clean solvent, as well as the equipment at the various components within the washing.

1. Filter replacement steps

● pump filter:

- (1)Using the wrench will pump a body filter outer shell to unload
- (2)Clockwise direction to revolving pump filter slightly .
- (3)Carefully checked filter a net and seal ring completely, when it's necessary ,Carry on cleaning or replacement .
- (4)Anti-clockwise direction to replace or clean the filter.
- (5)Installed to filter screwed tightly onto the out shell .



● gun body filter:

- (1) Open spray gun insurance.
- (2)Unload pikestaff with the wrench
- (3)To gently clockwise rotation direction of the filter under the gun body.
- (4)Will be clean filters installed anti-clockwise back of the gun body .
- (5)In determining the correct location grips ring, it will be grips Screwed tightly onto the back and loaded .
- (6)Close spray gun insurance(as the right chart).



● Suction ring component replacement

(1) In accordance with the "ball valve maintenance steps" to unload the upper and lower ball valve.

(2) Suction component will be below the two-position rotary nut removed.

(3) Suction tube components will be slightly shell and pulled down so that the shell about 1.5 cm from the equipment.

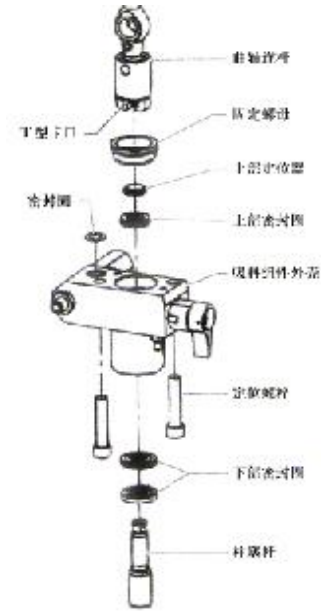
(4) From the field in the suction components will be introduced slowly shell straight Plunger rod to the crankshaft and connecting rod of the bottom of the T-mount separation.

(5) Will be down from the suction plunger rod components from the shell launched.

(6) Suction components shell will be fixed on the nuts and locator removed. (7) Will be removed within the shell on the three ring .

(8) Cleaning suction components shell will be installed with new white ring back Shell. (Installation of the order and direction of making reference to the following diagram).

Note: new suction equipment manufactured components for the black ring ,and suction component repair packet ring is white .

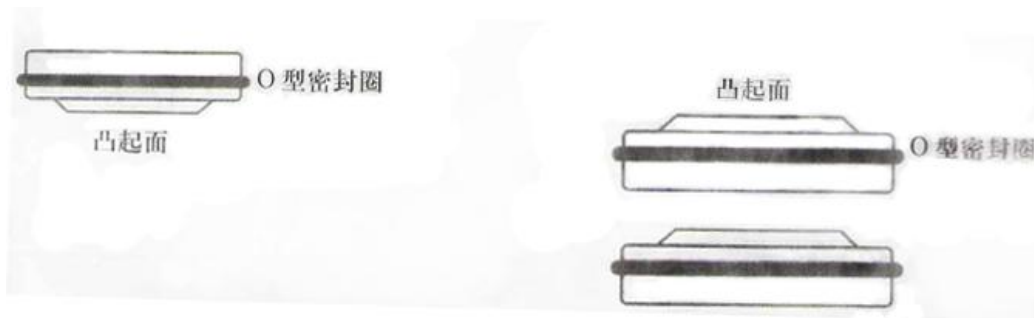


上部密封圈安装方向

O型密封圈在安装时应将上部密封圈上的凸起面朝下

下部密封圈安装方向

O型密封圈在安装时应将下部密封圈上的凸起面朝上



(9) Carefully check plunger rod, if wear or scratches, need immediate replacement.

(10) Will be loaded back on the ball valve and plunger rod screwed tightly .

Note: this link can be used on the crankshaft T-type card which be screwed tightly onto the piston rod fixation.

(11) Will be embedded in the upper locator nut fixed, and fixed equipment to suction nut shell components, the manpower to hand rotation.

(12) In determining seals ring and locator installed in the correct position, the piston rod will be components from the suction casing from the bottom to bottom-up equipment, and rubber hammer to knock plunger rod gently into the suction components, until the plunger rod into the correct position.

Note: plunger rod and all components required in the load applied to a small lubricants.

- (13) fixed nut screwed tightly with the wrench
- (14) Will be installed suction components embedded in the top of the bottom of the crankshaft connecting rod T-type Card notch .
- (15) Will be installed suction components pushed up until the suction equipment and components shell casing not seamless.
- (16) the bottom shell of suction Components will be fitted with screws and screwed tightly.
- (17) Will be installed under the block components together with the ball valve and cylinder components installed to suction screwed tightly onto the shell.
- (18) Suction pipe will be installed under the block and back with a fixed clasp.
- (19) Will be return tube back to the installation of suction screwed tightly onto the components.
- (20) According to the "operation steps" to activate the equipment and inspection equipment availability drip.
- (21) According to the "operation steps" to activate the equipment and inspection equipment availability drip.

Note: Even if there is a seal ring damage, but also the need to replace the entire maintenance package Accessories Group.

!! warning !!

Refrain in the installation, use ball valve plunger rod or tube clamp-vices, this will cause the piston-cylinder damage caused by the leaking of phenomenon.

7. Frequently asked questions and troubleshooting

equipment Frequently Asked Questions

Motor does not operate	1. Power circuit or not to poor contact	1. Check circuit
	2. Set too low pressure	2. Set too low pressure
	3 electrical Brush damaged or bad contact.	3. electrical Brush replacement or inspection.
	4. Motor burn	4. Replacement motor
	5. Switch damage	5. Replacement switch
	6. Equipment overload, power switch up	6. pressed to the power switch

No suction equipment	1. air in the tube	1. Check suction tubes and open to return valves
	2. Inadequate equipment pressure	2. increase pressure
fluxing is too small or no fluxing	1. No paint supply	1. Inspection
	2. Suction tube filter plug.	2. Cleaning or replacement filters
	3. Gun body filter plug	3. Cleaning or replacement filters
	4. high coating viscosity	4. Diluted paint
Equipment is impossible to maintain pressure	1. Equipment leakage	1. 1. Screwed tightly onto the equipment components
	2. Suction tube leak	2. Screwed tightly onto the suction tube and check
	3. the lower ball valve plug	3. Cleaning the lower the ball valve
	4. Cylinder seals under wear	4. Seal ring replacement.
	5. Ball valve wear or plug	5. Cleaning or replacing the ball valve
	6. Ball Valve seat wear	6. ball valve seat replacement
	7. Return valve wear	7. Return valve replacement
Pressure shortage	1. set Return valve too low	1. increase pressure
	2. Filter plug	2. Cleaning or replacement filters
	3. nozzle Excessive or wear	3. Replacement nozzles
Spray gun abnormal vibration	1. Incorrect paint\coating pipe	1. Replacement of the right paint pipe
	2. nozzle too much or wear	2. Replacement nozzles
	3. Too much pressure	3. Reduce pressure
The paint from the fuel leakage	1. Cylinder seals ring under wear	1. Replacement seal ring

2. spray gun Frequently asked questions

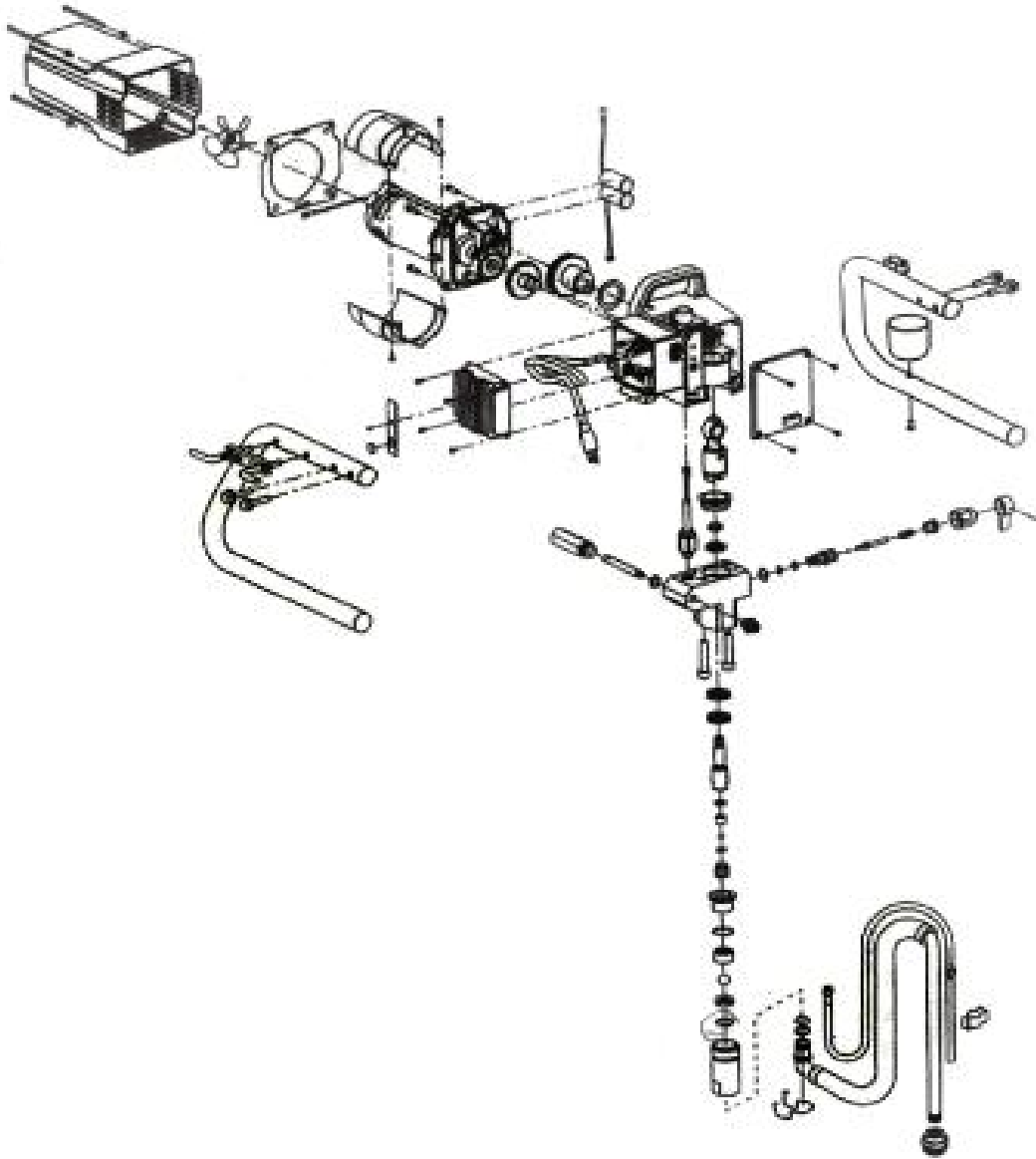
The spray gun has coating to leak	1. air in the Equipment	1. checking
	2. spray gun with dirty	2. clean pray gun
	3. spray gun seal ring wear	3. Seal ring replacement
spray gun can not stop discharging	1. spray needle seal ring wear	1. spray needle or seal ring replacement
	2. spray gun with dirty	2. Cleaning spray gun

spray gun not expecting	1 Supply free paint.	1. checking
	2. nozzle Or filter plug	2. Cleaning spray gun and seal ring
	3. spray needle wear	3. spray needle replacement

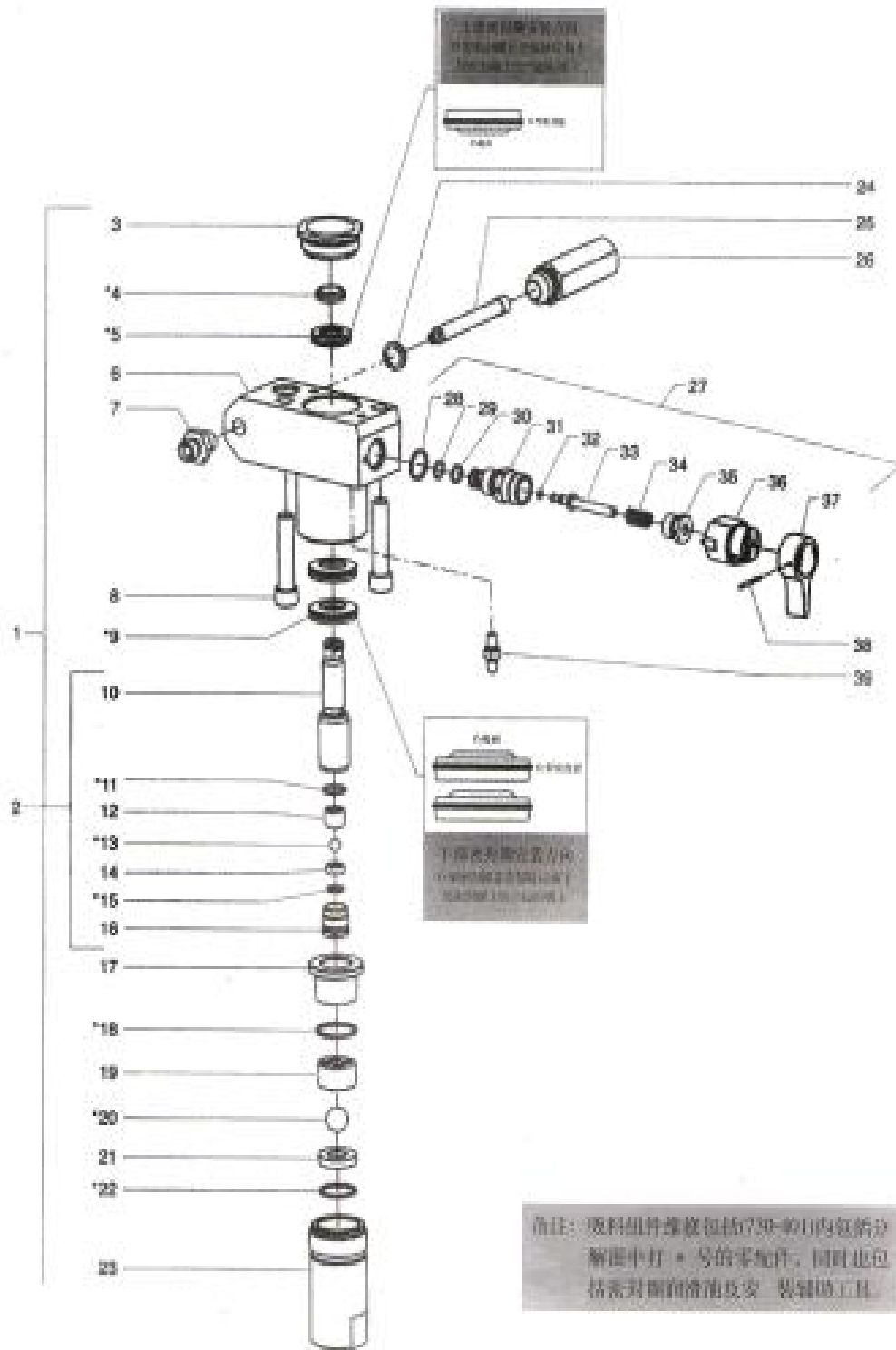
3. Spray Frequently asked questions

Trailing spray sites are phenomena	1.Spraying under pressure	1. increased Coatings pressure
	2. Paint can not be totally atomized	2. Replace smaller nozzle
	3. Paint enough velocity	3.cleaning spray gun and equipment seal ring
	4. Paint high viscosity	4. Reduce the viscosity of paint
	5. nozzle Wear	5. Replacement nozzles
Uneven spray sites	1. Nozzle clogging or wear	1. Replacement nozzles
Middle thick	1. there are gaps for Nozzle	1. Replacement nozzles
Spray rate distortions side	1. Nozzle clogging or wear	1. Replacing or cleaning nozzle
Spray rate jumps (Mandrax largest Mandrax small)	1. Suction tube leakage	1.check and Screwed tightly
	2.Incorrect use of paint	2. The correct use of paint
	3.nozzle too much or Wear	3. Replacement nozzles

8、 exploded drawing and parts list



Suction component decomposition map



Suction Component Model Description List

<u>No.</u>	<u>Product Description</u>	<u>quantity</u>	<u>No.</u>	<u>Product Description</u>	<u>Quantity</u>
1	Suction components	1	23	Under Ball Valve Cylinder	1
Complete suction components					
	(Does not include No.24-27)		24	Filter gaskets	1
			25	Filters	1
2	Plunger rod components	1	26	Shell filters	1
3	Fixed nut	1	27	Return valve components	1
4	Upper locator...	1		(include No.28-38)	1
5	upper seal ring	1	28	Return valve seal ring, brass	1
6	Suction components shell	1	29	O-type seal ring,fluoroelastomers	1
7	expected a joint	1	30	O-type seal ring,Teflon	2
8	Screw	2	31	Return valve casing	2
9	Lower seal ring 2		32	O-type seal ring,fluoroelastomers	2
10	Plunger rod	1		O-type seal ring, Teflon	1
11	the upper ball valve seal ring	1	33	return valve pole	1
12	Cover the ball on the ball valve	1	34	Return valve spring	1
13	the upper ball valves steel Ball	1	35	Return valve fixed nut	1
14	the upper Ball Valve ball on the Block	1	36	Return valve switch Block	1
15	O-type seal ring	1	37	Return valve switch	1
16	the upper ball valve cylinder	1	38	Return valve plug	1
17	Bushings	1	39	return tube of exports Joint	1
18	lower Ball Valve Seal ring	1	40	seal Ring installation tool	1
19	lower Ball Valve ball under the hood	1			
20	stell Ball under the ball valves	1			
21	Under Ball Valve Ball block	1			
22	O-type seal ring	1			

9. Annex

— . Nozzle Selection

Spraying the spray paint and the flow rate is determined by the nozzle, so choosing the right nozzle is very important and appropriate spraying construction sites can enhance the efficiency of the flow is appropriate to reduce unnecessary waste of paint, and vice versa Ran. Generally speaking, the viscosity of the coating in the choice of spray nozzle and the flow rate, an important subject, when used by the lower viscosity of the coating, we usually recommend the use of spray flow rate narrower and smaller nozzle Conversely, if coating viscosity higher or solid components in a higher viscosity, we would recommend that you use a wide spray and the rate of flow to the larger atomizing nozzle coatings, in the table below is different coating viscosity we recommended by the nozzle aperture size.

!! notice !!
Do not use more than the support of equipment nozzle diameter.

Nozzle diameter (inches)	spray paint	head of Fliter
.011—.013	Low Viscosity Varnish or color paint	100 head (red)
.015—.019	Oil and latex paint, exterior wall coating	60 head (white)
.021—.026	High solid content heavy-duty coatings	30 head (green)

1. seal oil and the protection of the pump body

Spraying in fixed before sealing oil will not only add to the role of sealing equipment, and better ensure that the cylinder piston rod sealing life, and in long-term storage does not work, let the body protection equipment inhalation solution is to prevent equipment corrosion or rust.

10. Technical data for DP6389

Electric power rating	900W
Input voltage	AC180—240V
Output voltage	DC200—220V
frequency	50HZ
Maximun output pressure	20MPa
The largest unloading flow	2.1L/min
The largest spray flow	1.9L/min
Effective spray distance	350-400mm
Spray width	250mm
Compressive strength of the high pressure	30 MPa
Max.nozzle type	515-519
N.W.	18.5KG

Product Quality Guarantee

1. Ensure that the products are Dino-Power Industry & Trade Co., Ltd. original products.
 2. Ensure that the products are qualified products, such as a product is found to have quality problems itself, users have the right to request replacement of local authorized dealers similar qualified products.
 3. User products from the date of receipt of the warranty period of 12 months including the complete machine shell, the pump body shell, the shell Lance gears, bearings, crankshaft, motors, electronic control devices, pressure flu devices.
 4. Scope of the warranty: in strict accordance with the Manual under the guidance arising in the course of normal operation of the product failures, and electrical parts thereof, and other non-normal wear and tear. Free for the maintenance of the above, including labour costs and replacement costs, and must produce proof of the purchases and effective products that specific date of purchase and exclusive pre-code, or no warranty。
 5. are not covered by warranty: consumable products including all the seals ring , gaskets, nozzles, needle guns, various types of thread, Brush filter, pressure relief valve components, piston rod, ball valve and ball valve seat; not Manual operation by irregularities and human as well as external factors lead to failure. Above are paid maintenance nature, it is calculated by charging fees.
 6. Warranty charges more than six criteria: cost of the replacement parts market price of 50 yuan fee for / hours (at the actual cumulative maintenance time); travel by users and local authorized dealer agreements standards.
-